
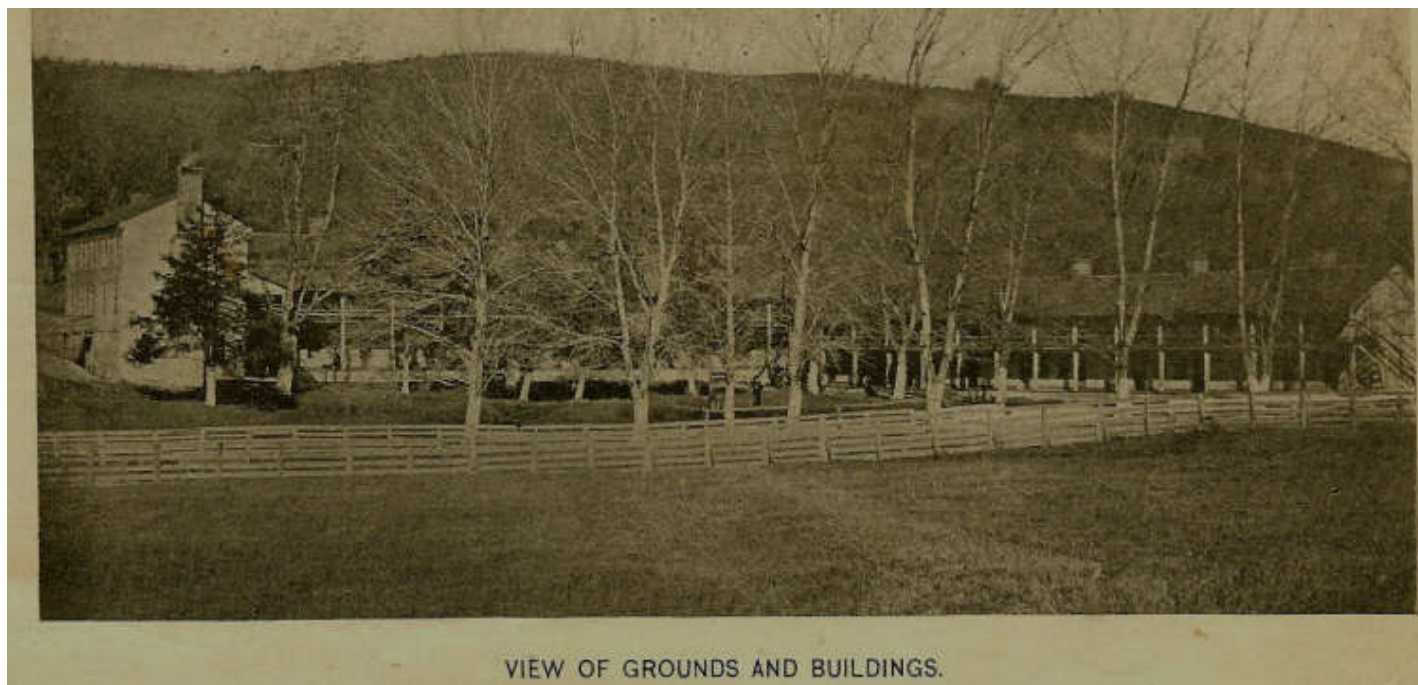


SHARON COLLEGE SCHOOL**CERES (FORMERLY EFFNA), VIRGINIA**founded in 1892, closed in 1901 

SHARON COLLEGE SCHOOL AS DEPICTED IN A PAINTING
BY PATRICIA NEEL (Karla) TURNER
(Prints are available for sale in the Ceres Museum)





VIEW OF GROUNDS AND BUILDINGS TAKEN IN 1900

Sharon College School operated as a boarding school from 1892 to 1901. The School was housed in two buildings originally erected as a hotel and summer health resort. The clean air and spring water were purported to aid in good health and some remarkable cures were reported to have taken place. No record has been found about the number of year the facility was used as a health resort. The school was located on Route 42 (near 8911 W. Blue Grass Trail and near the early days "Turnpike" to Burke's Garden) in the Sharon Springs community of Ceres, Virginia. Below is a reprint of much of the 1900 catalogue.

(Editorial note: The catalogue always had a space before a colon or semicolon.)

THIRD ANNUAL CATALOGUE AND ANNOUNCEMENTS
OF THE

Sharon College School

Sharon Springs, Effna P. O.

Bland County, Virginia

SESSION 1899-1900

WYTHEVILLE :

D. A. ST. CLAIR, PRESS.

1900

ANNOUNCEMENT

The next session will open
Wednesday, September 19th, 1900,
And continue nine months.

For catalogue and other information, address
J. T. Crabtree, Principal,
Effna, Va.

TEACHERS AND OFFICERS

OF

SHARON COLLEGE SCHOOL

FOR SESSION 1899-1900.

J. T. CRABTREE, A. M. Principal
A. B., Roanoke College, 1872, and A. M. in 1874.
Taught in Roanoke College from Sept. 1872 to Jan. 1890

MRS. KATE S. CRABTREE
Assistant Principal of School and Principal of Preparatory Dept.
Staunton Female Seminary

MISS CLAUDINE L. KIZER
English, Latin, French, Elocution,
Salem High School, Roanoke College

MISS LAURA TARTER
English, History,
Martha Washington College

MISS ANNIE K. SIBOLD
English, History, Arithmetic,
Luray Young Ladies College, Roanoke College

J. T. DUNN
Arithmetic, Algebra
Sharon College School.

MISS JESSIE GROSECLOSE

Piano and vocal Music
Sullins College

MISS NANNIE CRABTREE, MATRON

MISS MARY CRABTREE, MATRON

In Charge of Boarding Department

ROLL OF STUDENTS

Male Department

Armbrister, Charles	Wythe Co.
Barger, John	Bland Co.
Barger, Charles	Bland Co.
Compton, Jesse	Bland Co.
Crabtree, Eugene	Bland Co.
Dunn, Thomas	Bland Co.
Early, Everett	Baltimore, Md.
Groseclose, Marion	Bland Co.
Grubb, Claude	Wythe Co.
Grubb, Charles	Wythe Co.
Harmon, James	Smyth Co.
Hedrick, Howard	Bland Co.
Heninger, Leland	Tazewell Co.
McNutt, Robert	Bland Co.
Mustard, Bascom	Bland Co.
Newberry, Allen	Bland Co.
Newberry, Andrew	Bland Co.
Newberry, Harvey	Bland Co.
Newberry, Lawrence	Bland Co.
Pauley, Eugene	Bland Co.
Paxton, Charles	Smyth Co.
Shewey, Dunn	Bland Co.
Sibold, John	Giles Co.
Steel, James	Bland Co.
Suiter, Albert	Bland Co.
Suiter, Samuel	Bland Co.
Tarter, Charles	Bland Co.
Umberger, Arch	Wythe Co.
Umberger, Marvin	Wythe Co.
Waddle, Seldon	Bland Co.
Waddle, Edward	Bland Co.
Waddle Reece	Bland Co.

Female Department

Addington, Jennie	Grayson Co.
Addington, Myrtle	Grayson Co.
Armbrister, Belle	Wythe Co.
Bralley, Fanny	Wythe Co.
Cassell, Mary	Wythe Co.
Crabtree, Mattie	Tazewell Co.
Crabtree, Ethelyn	Bland Co.
Crabtree, Lena	Bland Co.
Davis, Maud	Bland Co.
Davis, Cleo	Bland Co.
Davis, Clara	Bland Co.
Dutton, Delia	Wythe Co.
Fanning, Maud	Bland Co.
Grosedose, Annie	Bland Co.
Newberry, Ida	Bland Co.
Newberry, Mary	Bland Co.
Peery, Mamie	Bland Co.
Rider, Minnie	Bland Co.
Scott, Lillie	Bland Co.
Shewey, Maud	Bland Co.
Stafford, Cora	Giles Co.
Tarter, Grace	Bland Co.
Tarter, Lula	Wythe Co.
Walker, Myrtle	Bland Co.
Williams, Hettie	Montgomery Co.

Grounds

The grounds are shaded and ornamented by large aspen, balsam, cedar and arbor vitae trees. Here, temptation is reduced to a minimum; for this is a quiet country seat, with no unpleasant or objectionable surroundings of any kind. There are no bar-rooms in the county.

Mail and Telephone

A daily mail passes the school, and recently constructed telephone lines give the following connections :

Sharon to Ceres ; thence to Burk's Garden ; and Sharon to Ceres, thence to Corinth, Tazewell, Rural Retreat ; Sharon to Ceres, Rural Retreat and Grayson County and Wytheville ; Sharon to Bland, Mechanicsburg and Giles County.

The present message charge is only ten cents for three minutes.

Buildings

The buildings, originally erected for hotel and summer resort purposes, are two in number, and face the campus on its north and east sides. The east building, two stories high, with double porch, contains twenty rooms. This is used by the boys only. The main building, also two stories high, with double porch, has twenty-five rooms. It is used for Chapel, Recitation rooms, Parlor, Music rooms and Girls' Dormitories.

The rooms are large, but can be made perfectly comfortable, even in the coldest winter weather, by the use of modern air-tight wood stoves. More than thirty of these stoves were used in the rooms last winter, and as many more as are needed will be added next fall.

Healthfulness of Location

The buildings here were erected for the purpose of accommodating the visitors to this health resort. The Chalybeate, Alum and gushing spring waters, the high and dry location and pure air, make this an ideal health resort. By his kind permission, we take pleasure in referring to *Dr. Samuel R. Sayers*, of Wytheville, who is intimately acquainted with the properties and effects of the waters here. Some remarkable cures have resulted from the use of these waters under his direction. **Delicate Pupils** almost invariably improve in health and flesh and yet pursue their full course of studies.

The Design of This School

The School has been established to do Preparatory and Academic work. It is not a college, but a College School. Colleges should not have to do Preparatory and Academic work, neither should High Schools assume the responsibilities of doing poor college work. One of the many needs of the educational system of our land is, not more colleges, but more good college schools. The design of this school is to prepare its pupils for the "higher colleges," or, for active life. The Principal has had twenty years' experience in college work, and is, therefore, well prepared to conduct a school that fits its pupils for a college course.

Practical Life

While the course of our School is designed to prepare pupils for college, we fully recognize the fact that not one High School student in ten takes a college course. Therefore, it is also our aim to prepare our pupils for active life. The theoretical, and the practically useful are blended as far as possible ; and the responsibilities and duties of good citizens are kept continually before the pupils. Principles of right are daily inculcated as the basis of a true and noble life.

Order and Discipline

Order and discipline are necessary in the family and in the school. We want no formal obedience, from a servile fear, but we ask and expect it from a sense of right. The reasonableness and necessity of law and order are strongly and persistently taught, by daily precepts, in regular lectures, and by private personal advice, appeals and admonition.

Pupils are treated as ladies and gentlemen by the teachers ; and in return, are expected to yield a ready and cheerful obedience to the rules of the school.

Pledge of Honorable Conduct

As a formal indication read and cheerful assistance to the teachers in conducting the school for the true interest and highest good of the pupils, each student is expected to subscribe to a pledge of honorable conduct ; such as becomes a gentlemen (or lady,) and a faithful, conscientious student.

If the pledge to act as a lady, or as a gentleman, is violated, then admonition in private, writing to parents, or permanent leave of absence, will follow, as the circumstances of each case may make necessary.

The Chapel

The chapel services, in the morning of each school day, and each night of the week, consist of singing led by the organ, reading a selection of Scripture, and prayer.

Sunday School

During the Session, a regular Sunday School, of which the Principal is the Superintendent, is maintained. The International Lessons are used.

Preaching

We have preaching by ministers of different denominations, as often as practicable, each month. Regular "once a month" sermons are expected from Lutherans, Methodist and Presbyterian pastors during the next school year.

Literary Society

The SHARONIAN Literary Society is composed of the young men. The close observance of the Constitution and By-Laws of this society gives its members ample opportunity for improvement in parliamentary law. The weekly debate, by all the members, is a special feature of the meetings and is productive of great benefit.

A Social Feature

At intervals of a month or six weeks, a "Social" evening is given. On this evening the members of the school meet in the Chapel and spend a few hours in social conversation and occasional games, in the presence of the teachers. Reading a few verses of Scripture, and Prayer by the principal closes the evening.

Medals and Prizes

A GOLD MEDAL is awarded to the successful contestant in Oratory. The conditions and rules of all the contest are under the direction of the Principal.

A GOLD MEDAL is awarded to the successful contestant in Declamation, and is open to the advanced classes of young men.

A GOLD MEDAL is awarded to the successful constant in Recitation, and is open to the advanced classes of the young ladies.

A BOOK PRIZE is given to the successful contestant in Declamation, and is open to the members of the elementary classes of the boys.

A BOOK PRIZE is given to the successful contestant in Recitation, and is open to the elementary classes of the girls and boys.

Public Exercises

No public examinations are held ; for they are unfair to the student, and a farce before the public. Parents will have more time and better opportunity to examine their children at home.

Besides the Closing Exercises of the school at the end of the session, one or more public entertainments will be given during the session.

The commencement exercises on June 5th and 6th, 1900 were well attended.





LAST KNOWN PICTURE BEFORE FINAL SECTION OF SCHOOL WAS TORN DOWN

(Tommy Repass picture)

Appreciation is expressed to Rebecca Kimberlin who provided the 1899-1900 Sharon College School [Catalogue](#) reprinted above, and to Patricia Turner and Tommy Repass who provided pictures.

[Back](#)